



## Countryside & Rights of Way

# Walk 5: Bradford District Fair Trade Way

## Burley-in-Wharfedale to Ilkley

**4 miles/6km linear walk (returning to Burley by bus or train)**

### Bradford District Fair Trade Way

The Fair Trade Way was created by the Bradford Fairtrade Zone as a scenic, circular walking route linking all the Fairtrade Villages and Towns in the Bradford District: Bradford, Shipley, Bingley, Baildon, Burley in Wharfedale, Ilkley, Keighley, Haworth (world's first Fairtrade Village) & Thornton.

Fairtrade is a global movement for change for both people and planet. It aims to end exploitation and poverty, mitigate the impact of climate change, and create economic, social and environmental sustainability and trade justice for farmers and workers in low-income countries.

[www.fairtrade.org.uk](http://www.fairtrade.org.uk)

This section of the Bradford Fair Trade Way has been devised by linking existing footpaths, tracks and roads.

Walking boots and good wind and waterproof outdoor clothing is strongly advised. This route is not suitable for disabled access. It is essential to carry enough food and drinks. Cafes, pubs and food shops can be found in Ilkley.

A walk of approximately 4 miles with about 120m steady climb incorporating Wharfedale and moorland views, including the Cow and Calf rocks. Comfortable strong walking shoes are recommended along with outdoor clothing to suit the weather on an exposed hill. A light snack and water are advisable although there is a pub and a café along the route.

Please take care when crossing the railway and major roads keeping children under close supervision at all times.

This walk is not suitable for pushchairs or wheelchairs and people who have walking difficulties.

Time: Allow 2 to 3 hours

Public transport information:

**Metro Line:** 0113 245 7676

<b>MAP</b>	OS Explorer 297 Lower Wharfedale & Washburn Valley
<b>BUS</b>	962
<b>PARKING</b>	Local streets
<b>RETURN</b>	Train to Burley
<b>TOILETS</b>	Clevedon House, Cow & Calf cafe
<b>FAIRTRADE</b>	Burley Deli, Oxfam, Christchurch on The Grove, Supermarkets

### THE ROUTE



**Starting from The Roundhouse, Burley in Wharfedale**  
Access from Burley station is down Station Rd to Main St. at mini roundabout. Turn R in front of Burley Grange – The Roundhouse is directly ahead opposite the Red Lion.

Walk from the Roundhouse along Main Street in the direction of Ilkley passing Burley Grange. Cross Station Rd. and pass the fountain outside the deli. Carry on along Main St. bearing L down Sun Lane. Sun Lane Chapel (now flats) is on your L. Carry on along Sun Lane until you meet junction with Greenhow Park on L. Ahead is a sign to the bridleway on L which leads towards railway crossing with gates.

### Starting from Burley-in-Wharfedale Station

Follow Station Road towards town centre. Turn L on Southfield Road. Continue to T junction and follow Hall Drive R. Pass Hall Rise L and look for snicket on L. On reaching bend on Greenhow Park turn L and go to end of road. Find snicket going off L towards railway. Continue to footpath and turn L to cross railway track.

### TAKE CARE: IF YOU CAN SEE OR HEAR A TRAIN IN EITHER DIRECTION, WAIT UNTIL IT HAS PASSED BEFORE CROSSING.

Keep children and dogs under control. Go uphill following the clear path past Catton Wood on your right. The route is a bridle path and can be churned up by hooves in wet weather.

Pause at the ash tree where the gradient flattens for the first time and look back at Burley and Otley and down the Wharfe valley to Arthington viaduct.

At the top of the hill, pass through a metal five-bar footpath gate and carry on in the same direction to a 7-bar gate into the next field. This section can be very muddy in winter: boots are strongly recommended! Pass through the gate and continue.

Walk on with a small stream on the left and a fence, sometimes electrified, on the right. Pass through a six-bar metal field gate to reach an unmetalled lane. Go straight on along the lane towards a wooden 6-bar gate. There is a stile at L of this gate that should be crossed. Head towards some buildings now to be seen across the meadow in front of you. The path is well used and reasonably clear on the ground.

Head towards the R corner of the field, where a stile can be seen. Cross this, and proceed to another stile that leads into a farm lane. Turn L into the lane.

At this point, there are good views: high ridge of Burley Moor L and R across the valley to Denton Hall. This imposing building was erected in 1778 to designs by John Carr, the celebrated York architect; the parkland being landscaped at the same time. Two previous houses on or near the present site were apparently destroyed by fire. In the earliest of the three houses to occupy the site, Prince Rupert lodged on his way to York, just before the battle of Marston Moor in 1644. The famous local Fairfax family was long associated with the Denton Estate.

Continue on through a gate L of a cattle grid. Now continue past Clevedon House - once a Licensed Victuallers School but now a retirement complex with café open to walkers. This complex was opened by Angela Rippon in September 2009. Ben Rhydding Drive is on R. Walk round the corner ahead and go up the hill: Wharfedale Grange Farm is on R.

Just before the lane turns L, you will see a cattle grid on R, leading to another lane which, in turn, goes in front of some buildings. There is a gate on R of this, which is the direction to be taken. However, please note that the right of way is through the big gate on the left side of the cattle grid and alongside the lane in front of the buildings.

(A short distance along the lane R is a well-used meadow path leading to Ben Rhydding.)

The walk continues up the lane ahead. At a junction of paths, keep straight on to Gib Field Farm, the sign for which can be seen on L at the start of the short lane leading to the farm.

Pass the farm buildings and go through the footpath gate L of a 5-bar wooden field gate. This path leads out on to Ben Rhydding Golf Course, and is subject to rapid overgrowth, requiring frequent clearing by members of the Ramblers' Association.



Making sure that no golf balls are likely to come your way(!), keep on in the same direction, aiming for a bunker ahead of you, with some trees R. The path goes between the bunker and the trees.

The panorama is excellent at this point: particularly the view towards the Cow & Calf rocks. Even if you haven't been this way before, you may feel that you know the area, as a number of scenes for the television programme "Heartbeat" have been filmed on this golf course.

The undulating path continues across the course giving consistently good but changing views of the Cow & Calf rocks. Walk with a stone wall to L for a while to finger post pointing in direction of Cow & Calf rocks.



Cross bridle and veer R towards a distinct stone building in the distance. (This was previously Ilkley College but now a residential development.) There are various well trodden paths through bracken. Ilkley Tarn soon emerges. Go R along tarn following the path around and down towards town. At junction of paths by a lamp post go R down hill to Wells Rd. Paddling pool is on the left. Go through gate and cross road by cattle grid to go down Wells Rd.

On R is the house where Charles Darwin stayed with his family while awaiting the publication of his 'Origin of the Species'. Referring to walks on the moors he regarded as bumpy turf and rocky where "I fell down on Sunday morning & sprained my ankle".

Pass through gap and turn L walking uphill until you reach the road. Cow & Calf Hotel is on L with café opposite.

Keep on going down to reach the town centre. The railway and bus terminus is R opposite Kings Hall.

Turn R and walk downhill to another footpath sign pointing across the road to moors. There are a number of well-worn paths crossing this common below the Cow and Calf rocks. Take path about 200m lower and with the rocks on L make your way towards the Ilkley end of copse of trees and cross stream at a bridge.

Alternatively, follow the footpath down the Ghyll to reach the town centre.

Near this bridge, upstream, a Stanza Stone was carved with poetry by Simon Armitage. (Now overgrown by moss)



**Footnote**

We hope you enjoyed your walk. If so tell your friends, if not, or you have encountered any problems please tell us at:

**City of Bradford Metropolitan District Council**  
 Countryside and Rights of Way Service  
 4th Floor, Britannia House, Hall Ings, Bradford BD1 1HX

Tel: 01274 432111  
[www.bradford.gov.uk/countryside](http://www.bradford.gov.uk/countryside)



Walk route devised by Bradford Fairtrade Zone


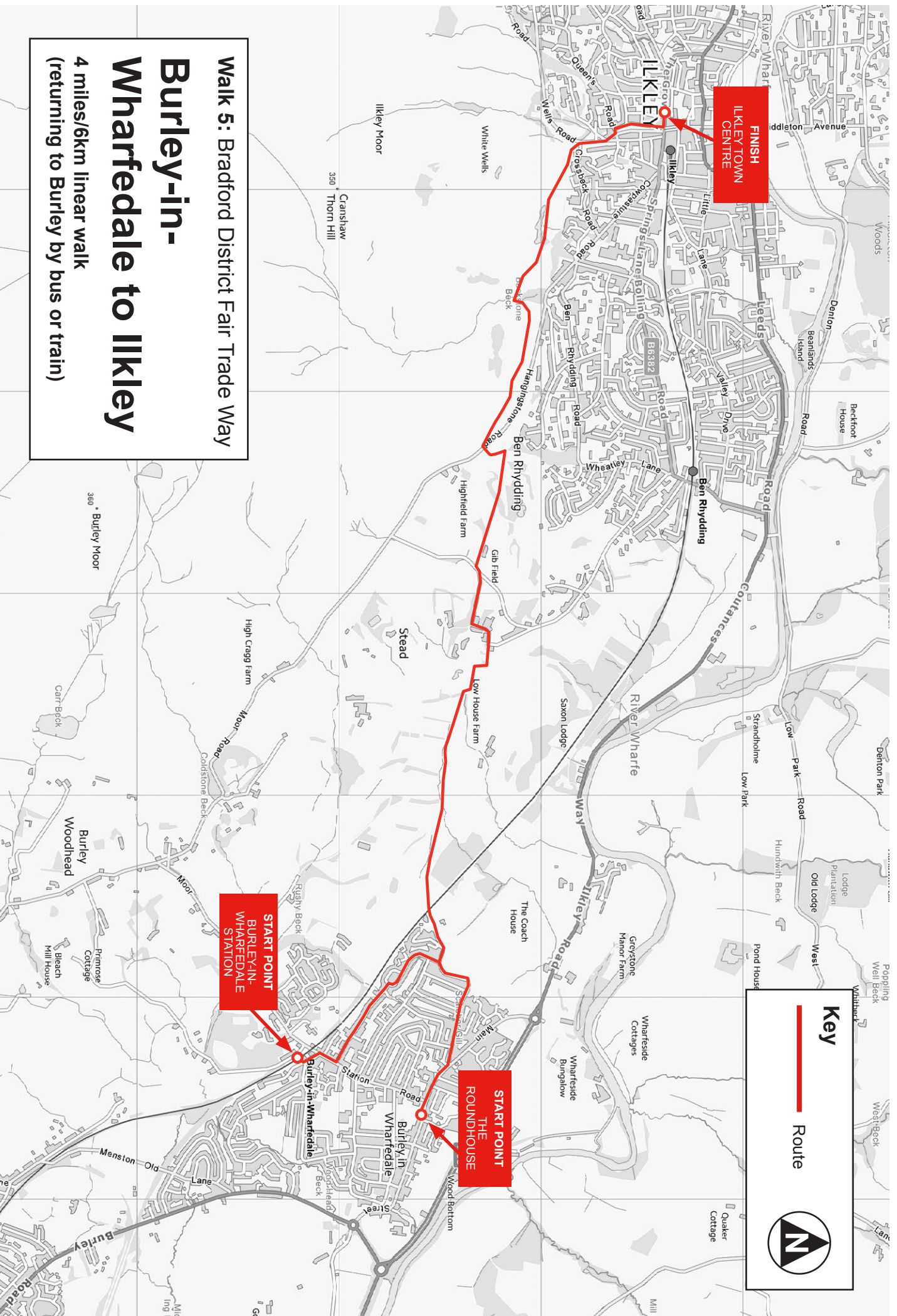


Find us on facebook:  
[fairtrade.bradford](https://www.facebook.com/fairtrade.bradford)



**Key**

— Route

**Walk 5: Bradford District Fair Trade Way**

**Burley-in-Wharfedale to Ilkley**

4 miles/6km linear walk  
(returning to Burley by bus or train)

**FINISH**  
**ILKLEY TOWN CENTRE**

**START POINT**  
**BURLEY-IN-WHARFEDALE STATION**

**START POINT**  
**THE ROUNDHOUSE**