

Countryside & Rights of Way



West Scholes House

South West Thornton

4³/₄ miles (7.6km) Circular Walk

Walk Information

Starting by using part of the Bronte Way through Thornton to the cemetery from where the exploration of the south west of the parish really begins. Using little used footpaths and tracks reasonably fit agile walkers should have no difficulty negotiating the many stiles and gates, some of which are showing their age as you make your way around this under used corner of the Bradford district. Just over half way along the route roads have had to be used to make up this circular walk. Fortunately this is for only 3/4 mile most of which is along country lanes. Please take care.

Away from Thornton village there are no shops or public houses until you reach The Raggalds public house on the Brighthouse/Denholme Road or The Junction Inn on Lane side in West Scholes village, therefore it is advisable to take along food and drinks. Strong footwear is essential along with outdoor clothing to suit the season. Due to the very nature of the countryside this walk is not suitable for pushchairs, wheelchairs and people with limited mobility.

Car Parking

There are no public car parks nearby, therefore parking is on street. Please note that on street parking near to the church is often limited especially on Sundays.

Public Transport

Bus services 696 and 697 Keighley to Bradford Interchange pass the walk start point, other buses are available, please contact Metroline on 0113 245 7676.

The Walk Start Point

St James' Parish Church on the B6145 Thornton Road at Thornton, Bradford, BD13 3AB.

The Walk Route

Starting with your back to St James's church, turn right along the pavement for a short distance before turning right up the narrow snicket at the left hand side of the church building. At the top of the snicket turn left onto Bronte Old Road, following it straight ahead as its name changes to Market Street. Where Market Street ends at its junction with Kipling Lane and West Lane in the centre of the village, turn right to start the steep climb out of the village by walking up West Lane for quite a distance, to its junction with the top of James Street. Here cross over West Lane to walk along Reservoir View, the rough road opposite. At the end of Reservoir View go through the gap in the stone wall and continue by walking straight ahead following the well worn path along the hillside, climbing several stiles and crossing the fields until you reach the rusty metal railings and kissing gate at the entrance to Thornton cemetery.

Go through the kissing gate into the cemetery to follow the wide surfaced promenade flanked by the gravestones straight ahead, eventually exiting the cemetery at the far end via a second kissing gate. Through the gate the path is along the back of a few cottages before going through a gap to the left hand side of an old field gate and down a few stone steps onto the grassy track at Close Head. Bear right up the track for only a short distance before leaving the Bronte Way by turning second left off the track to go down Close Head Lane, the tarmaced road between the houses. Continue downhill where the surfaced road changes to a dirt road to its junction at the bottom with Thornton Road, the main road which crosses from left to right. Cross the main road turning right on the opposite side to walk up Thornton Road for approximately 50yds (45m) to the second entrance on your left leading onto the forecourt of Simmonites, the Land Rover garage on your left. Here walk downhill straight ahead between the vehicles keeping as close as possible to the garage building on your right. At the bottom end of the forecourt the footpath goes through two large metal barriers, these are generally open when the garage is open but if closed access to the path is still possible. Through the barriers it's straight ahead crossing the disused and long dismantled railway line to a stile opposite, through the stile walk up the field with the wall on your right for the short distance to find a second stile on your right through the wall. Go through and into the next field, from here the path bears to the left diagonally straight ahead cutting the corner of the field as you make your way to what appears to be the end of a stone wall which can be seen ahead. On reaching the 'end of the wall' the path turns left round the wall corner to follow the wall on your left all the way to the top of the field. Turn right at the top left hand corner of the field to walk along the field boundary still with the stone wall on your left until you reach a gateway.

Here adjacent to the gateway look for the stile leading straight ahead through the stone wall.

Go through to follow the path along the top of the field keeping as close as possible to the wall on your left. Nearing the end of the field the path is partially blocked by a wooden structure, this can easily be by-passed as you make your way to the gate at the top left hand corner of the field. Go through the gate and almost immediately through a second gate onto a wide farm access track at the rear of Squirrel Farm. At this point the definitive line of footpath goes along close to the gable end wall of the farm buildings and into the farmyard, however, the landowner prefers walkers to use the access track by turning right to walk the short distance to where the track meets the surfaced road at the junction of Cragg Lane and Squirrel Lane. Here turn left along Squirrel Lane, passing Squirrel Farm and the cottages on your left where, opposite the last cottage turn right off the road to re-join the footpath by going through a gate at the side of the outbuildings on your right. Immediately through the gate go through a second gate into a field to follow the wall on your left the short distance to where the wall ends.

Here the path bears slightly to the left straight ahead walking beneath the electricity cables across the field to a stile leading out onto Deep Lane. Turn right up Deep Lane for a short distance before taking the first turn left along a surfaced access road leading to Lower Sandal, a former farm complex but now converted into two dwellings. Follow the access road passing both buildings on your right to eventually reach a field gate, go through walking straight ahead to a second gate and into a field. Cross the field straight ahead to a stile through the wall which can be seen at the far side of the field. Through the stile the path follows a stone wall on your right to a gateway at the top right hand corner of the field. Go through the gate following the path as it bears slightly to the right uphill, crossing the field to a stile through the wall, to the left of, but near to the buildings of Nettle Hole Farm, which can be seen ahead on the skyline. Over the stile into the former farmyard at Nettle Hole Farm, the path is straight ahead passing in front of the first building on your right, to walk the short distance to where the path is joined from the left by the farm access track.

Here our route continues ahead in front of the second recently converted building now walking with the fence on your right. Where the fence ends at the far end of second building turn right uphill to walk between the second and third buildings to join the farm track through a gateway and into a field. Follow the obvious track the short distance up the field to a second gateway, through the gateway continue to follow the track steadily uphill walking close to the wall on your left and passing on your right lots of old discarded farm implements. Where the field levels out continue to follow the wall on your left until you reach the gate and step over stile at the top left hand corner of the field leading out onto the Denholme Brighthouse Road. Turn left along this busy road passing The Raggalds public house on your right, walking for quite a distance before turning left off the main road to go down Pitt Lane. Walk down Pitt Lane for approximately 150yds (137m) before turning first right along Low Lane, following it for some 1/2 mile (.8km) until you reach the road junction at Lane Side, Carter Lane and the top of Cockin Lane in the village of West Scholes. Here turn left the short distance to where the road divides again in front of the Junction Inn public house, bear left



Junction Inn, West Scholes

here off the main road and across the entrance to the pub car park to go down Brewery Lane, the steep setted rough track alongside the pub car park. Continue to follow Brewery Lane past West Scholes farm and the houses on your left straight ahead for quite a distance, ignoring other paths which might tempt you off to the left and right, before eventually passing Lower West Scholes farm on your left.

After approximately 250yds (228m) further down the track from the entrance to Lower West Scholes farm and 100yds (91m) before the track ends at a gate which will become obvious, look out on your right for a field gate. Do not go through the gate but leave the track here via the step over stile hidden in the wall corner to the left of the gate. Once over the stile follow the footpath down the edge of the field, walking close to the wall on your right to a stile at the bottom of the field which leads into a walled/fenced path, passing on your left a small copse of pine trees before eventually crossing the metal footbridge over the route of the dismantled railway line for a second time. Across the bridge the path is straight ahead and down a steep flight of steps onto a field, keeping close to the wall on your right to a stile at the bottom corner. Through the stile the path continues downhill now walking with the wall on your left, the short distance to a narrow gateway next to a field gate. Here go through, turning right, to follow the post and wire fence on your right down the field for the short distance to the corner where the fence turns right.

Here, continue straight ahead down the field and under the mature trees to find a stile through the next stone wall. Once through the stile go down a flight of stone steps following the path downhill with the wall on your right to yet another stile to the right hand side of a field gate in the valley bottom. Over this stile continue straight ahead along the well defined path between the wall and the fence, to another stile at the intersection of two paths which cross from left to right. Here again continue straight ahead along the walled and fenced path to a third stile before going down more steps which lead out onto Headley Lane. Turn right along the lane passing the cottages on your right to where the road changes its name to Green Lane; here join the pavement on the right hand side of the road to start a steep climb out of the valley bottom eventually passing on your left a long row of cottages. Nearing the top of the row of cottages opposite house number 20, lookout on your right for the stile through the stone wall on your right.

Go through the stile to walk straight ahead with the wall on your left across the field for approximately 150yds (137m), here the path turns right and then almost immediately left to continue straight ahead for a further 100yds (91m) near to two field gates, one on your right and another straight ahead. Turn sharp left here to walk steeply up the field keeping close to the high stone wall on your right to a stile at the top of the field leading out onto Thornton Road near to where you started your walk.

Footnote

We hope you enjoyed your walk. If so tell your friends, if not, or you have encountered any problems please tell us at:

City of Bradford Metropolitan District Council
Transportation, Design and Planning
The Countryside and Rights of Way Service
5th Floor, Jacobs Well, Bradford BD1 5RW

Tel: 01274 432666

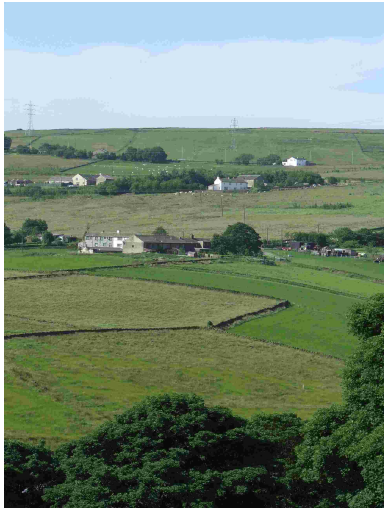
www.bradford.gov.uk/countryside

e-mail: danny.jackson@bradford.gov.uk

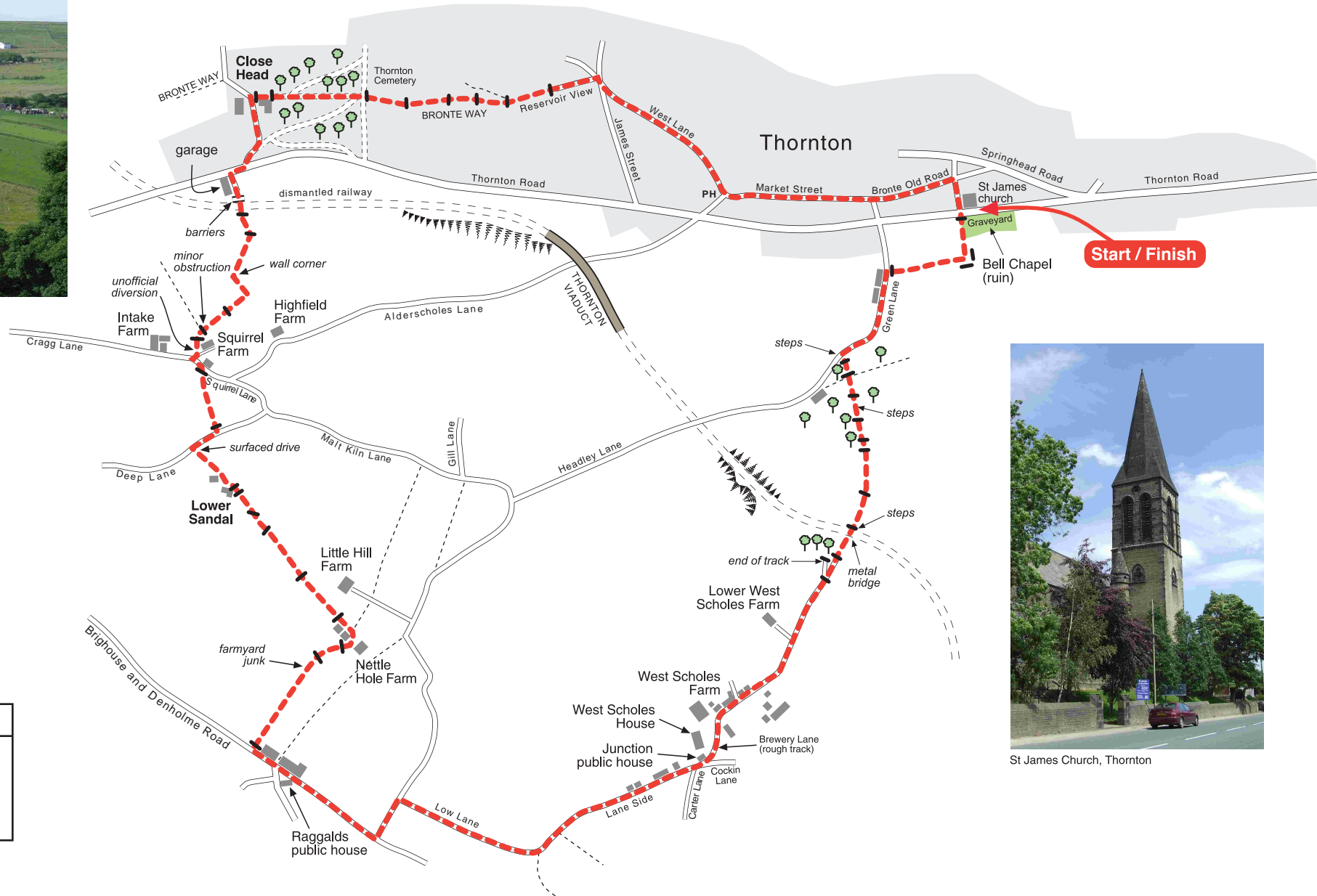
April 2010

South West Thornton

4³/₄ miles (7.6km) circular walk



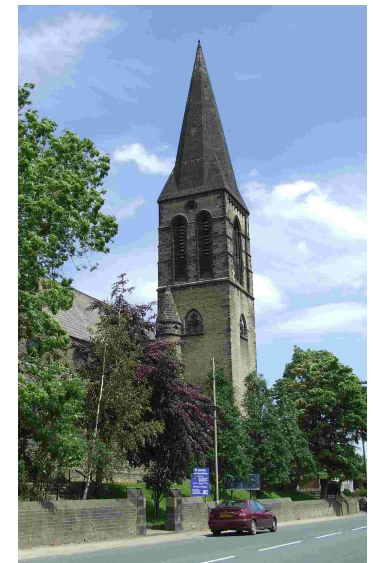
View across the valley from Thornton Cemetery



Key

- - - Route
- Stile/Gate
- - - - - Footpaths

Map not to scale



St James Church, Thornton