

Pudsey Beck & Cockersdale

3 1/2 miles (5.6km) circular walk

Start Point:

Keeper Lane at the junction with Tong Lane near the Greyhound public house at the centre of Tong village south east Bradford GR 223306.

Walk Information

A surprisingly rural walk on green belt land between Bradford and Leeds. Suitable for walkers of all abilities on easy to follow valley bottom paths, but with lots of stiles. Returning through woodland with a long gentle climb to finish but nothing too strenuous. Comfortable strong footwear is recommended with outdoor clothing to suit the season. A light snack with drinks is advisable, especially if walking with children. This walk is not suitable for pushchairs, wheelchairs and people with restricted mobility.

Public Transport

There is no public transport available for Tong Village. Contact Metrolink on 01132 245 7676 for details of the nearest service.

Car Parking

There are no public car parks in the village; therefore parking is limited to on street. Please park with care and consideration.

The Walk Route

From the main road junction of Tong Lane and Keeper Lane walk up Keeper Lane following the tarmaced surfaced road for approximately 300yds (274m) until you reach a field gate just beyond the last house on the right. Here continue straight ahead through the gap to the left hand side of the gate to follow the now much narrower rough surfaced continuation of Keeper Lane as it starts its gradual long descent under the trees down into the valley bottom. On reaching the valley bottom the track divides, one route continues straight ahead using the ford to cross Pudsey Beck. Our route bears to the right and uses the footbridge to cross the beck.

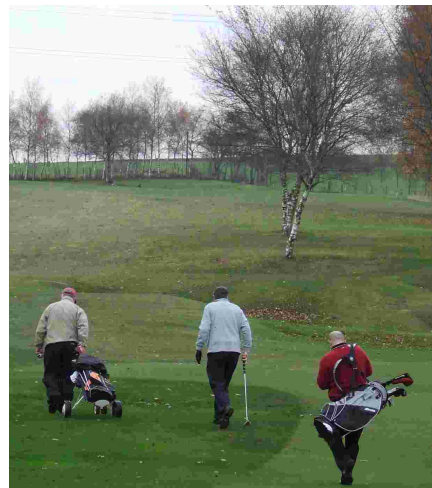
On the opposite side of Pudsey Beck the path divides again, our route bears to the right. Follow the narrow well defined path for a short distance before joining a much wider path as you start your walk along the valley bottom following the perimeter of Fullneck golf course to your left and Pudsey Beck on your right. Exit the golf

course via a stile, still following the well defined path over un-cultivated land as you continue your walk along the valley bottom, negotiating three more stiles before eventually reaching a gap in the stone

wall. Through the gap turn immediately right, then left to walk along a limestone path with the fence on your left and Pudsey Beck on your right as you pass by a semi derelict industrial area on the left before eventually reaching a kissing gate. Through the kissing gate continue to follow the beck on your right as you cross more fields, still following the well worn path and negotiating five more stiles before eventually going through a second kissing gate.

Turn left through the gate, still with the beck on your right to follow the limestone path through and over two more stiles before exiting out onto the main road, Roker Lane. Turn right along the right hand side of Roker Lane passing on your right the recently converted mill building as you make your way to the junction with Tong Lane at the top of the slight incline. Cross Tong Lane to rejoin the footpath by going between the two large stone gate stoops opposite. Immediately through the gap turn right off the wide dirt track and through a gate to follow a much narrower path leading down into the woodland to start your return journey via Cockersdale.

Follow the well trodden woodland path quite wet in places, walking parallel with Tong Beck on your right for quite a distance to where the path divides. Here our route is to the right across the small footbridge and up a slight incline bearing left after a short distance as you near a kissing gate at the highest point of the path.



Fullneck Golf Course



Footbridge - Cockersdale

Through the kissing gate the well trodden path is straight ahead along the bottom of a meadow, eventually walking on a stone paved section of the path as you enter the woodland. Where the stone paved section ends the well trodden path continues straight ahead passing between two old stone gate stoops before eventually reaching a small metal gate. Through the gate continue following the path straight ahead, eventually going through two more metal gates as you walk parallel to Tong Beck on your left until you reach a kissing gate leading out onto Springfield Lane. Turn right here to start your long steady climb up Springfield Lane back to Tong village. On reaching the main road at Tong turn left to follow the road for approximately 150 yds (137m) back to your walk start point at Keeper Lane.

Footnote

We hope you enjoyed your walk. If so tell your friends, if not, or you have encountered any problems please tell us at:

City of Bradford Metropolitan District Council
Countryside and Rights of Way Service
5th Floor, Jacobs Well, Bradford BD1 5RW

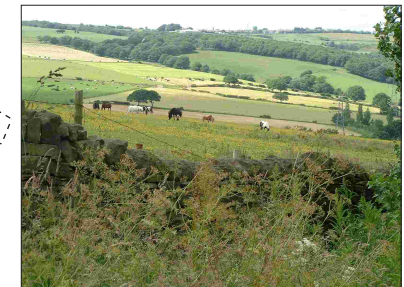
Tel: 01274 432666
www.bradford.gov.uk/countryside
e-mail: crow@bradford.gov.uk



Springfield Lane

Pudsey Beck & Cockersdale

3 1/2 miles (5.6km) circular walk



Looking west from Keeper Lane



Public house near to the walk start point

Key	
	Route
	Stile/Gate (approx. location)
	Other paths

Not to scale